

Introduction:

The KPIC-PT1 is a prototyping PCB designed to be used stand alone or in conjunction with other KPIC boards. It is provided as a bare PCB and you only add what you need.

Features:

- Single Sided PCB with solder mask and top overlay.
- Good size prototyping area
- Room for 8 x LED's and resistors
- Room for edge connectors
- Power rails
- KPIC compatible expansion connector
- Pb free version available on request (Minimum order quantity applies)

Technology:

- 1.6mm FR4 Glass Epoxy with 35um (1oz) finish copper.
- Solder tinned HASL
- Green solder mask on bottom layer
- White silk screened top overlay

Photo:

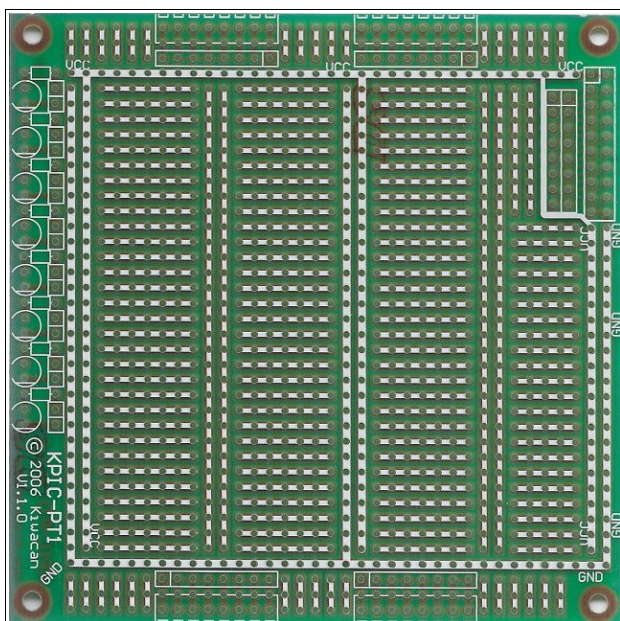


Figure 1: Photo of KPIC-PT1

1.0 ORDERING INFORMATION

The KPIC series are currently available from the following distributors.

- Farnell In One
www.farnellinone.com
- South Island Component center
www.sicom.co.nz
- Kiwacan Direct (Starting mid 2006)
www.kiwacan.co.nz

Kiwacan part numbers as follows:

Standard: KPIC-2840P

Pb Free: KPIC-2840P-PBF

Note: Pb Free boards are done as special orders and have MOQ and specific pack sizes.

2.0 CONTACT INFORMATION

For more information please visit our web site:

<http://www.kiwacan.co.nz/>

For sales inquiries please email:

sales@kiwacan.co.nz